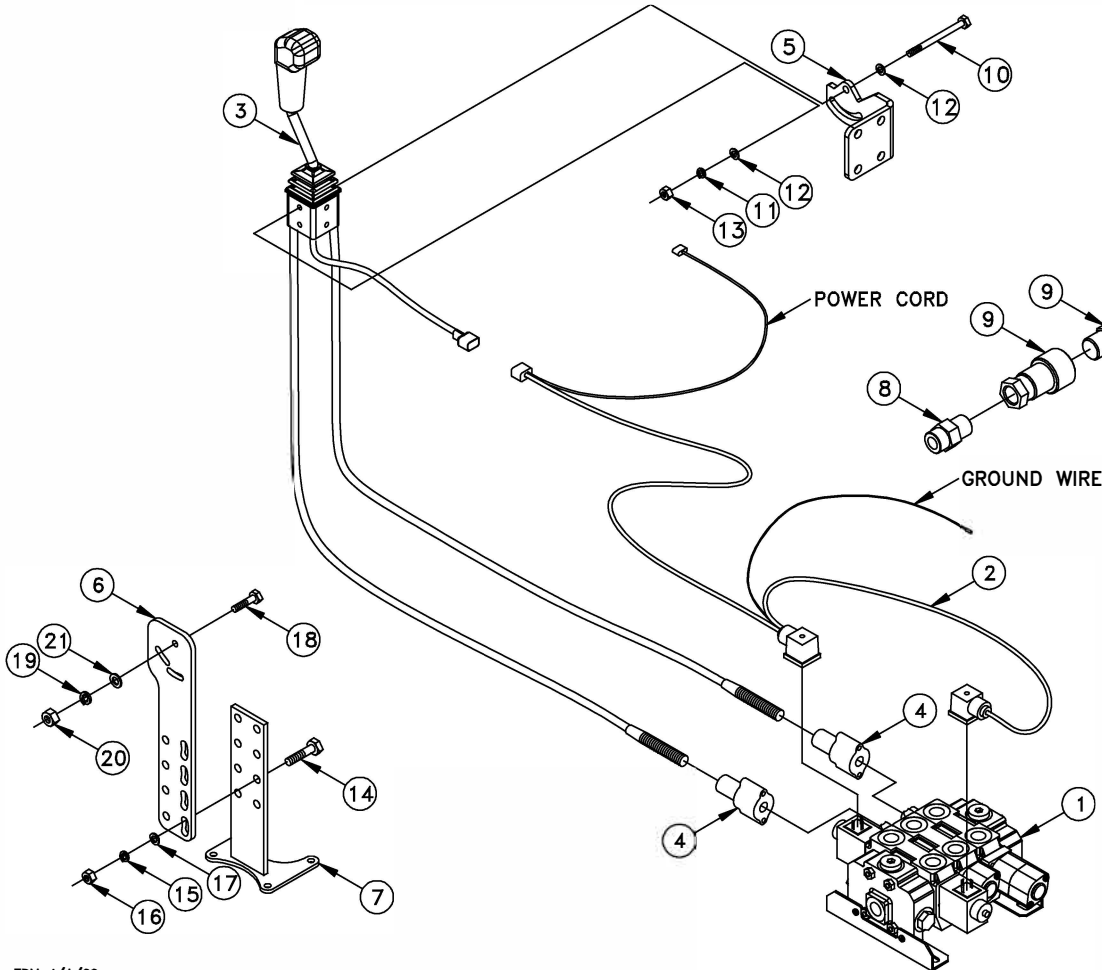


669293 UNIVERSAL 3 SPOOL LOAD SENSING VALVE KIT W/JOYSTICK & SOLENOID FUNCTION



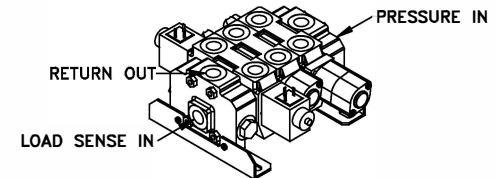
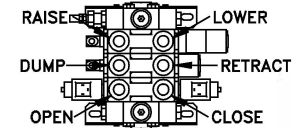
SHORT LINE PARTS, LLC
SALES@SHORTLINEPARTS.COM

NOTE: 1. MODIFICATIONS MAY BE NEEDED AS NECESSARY.



KEY	PART NO.	DESCRIPTION	QTY.
1	668963	3 SPOOL LOAD SENSING VALVE	1
2	683162	WIRING HARNESS	1
3	683155	JOYSTICK CABLE CONTROL KIT W/78" CABLES	1
4	669298	CABLE CONNECTOR KIT	2
5	684725	JOYSTICK HANDLE BRACKET	1
6	672195	JOYSTICK STAND PLATE	1
7	672185	JOYSTICK STAND BRACKET	1
8	669377	ADAPTER	9
9	641758	1/2" QUICK COUPLER SET	6
	#925	HARDWARE BAG	1
10	669618	HH CAP SCREW; 5/16" x 3 1/2"	2
11	640151	LOCKWASHER; 5/16"	2
12	640152	FLATWASHER; 5/16"	4
13	652360	HEXNUT; 5/16"	2
	663708	JOYSTICK DECAL	1
14	640060	HH CAP SCREW; 1/2" x 1 3/4"	2
15	640157	LOCKWASHER; 1/2"	2
16	640139	HEXNUT; 1/2"	2
17	640158	FLATWASHER; 1/2"	1
18	640034	HH CAP SCREW; 3/8" x 1 1/2"	3
19	640153	LOCKWASHER; 3/8"	3
20	640132	HEXNUT; 3/8"	3
21	640154	FLATWASHER; 3/8"	2

TOP VIEW OF WORKING PORTS ON THE VALVE



1. VALVE IS SHIPPED LOAD SENSE CLOSED CENTER.